

FOCUS

Products

INDUSTRY 4.0



TaeguTec
Member IMC Group

TAEGUTEC **SPEEDTEC** HIGH SPEED & FEED LINES

**Il futuro delle
lavorazioni dei metalli
è oggi**



Contenuti

Tornitura



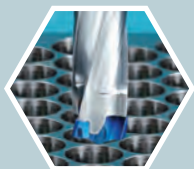
RHINOXTURN <small>FINISH TOOL</small>	4
RHINOMTURN <small>MINI LINE</small>	5
TOPMINI	6
T-TURN (per la tornitura di acciaio)	7
T-TURN (per super leghe)	8
COOLBURST <small>EMULSIONED COOLANT</small>	9

Troncatura e scanalatura



CUTSPEED <small>HIGH FEED PARTING</small>	10
QUADRUSH <small>PARTING & GROOVING</small>	11
QUADIRUSH <small>INTERNAL GROOVING</small>	12

Foratura



DRILLSPEED <small>INDEXABLE 3 FLUTE</small>	13
DRILLRUSH <small>RUSH 2 FLUTE</small>	14

Fresatura

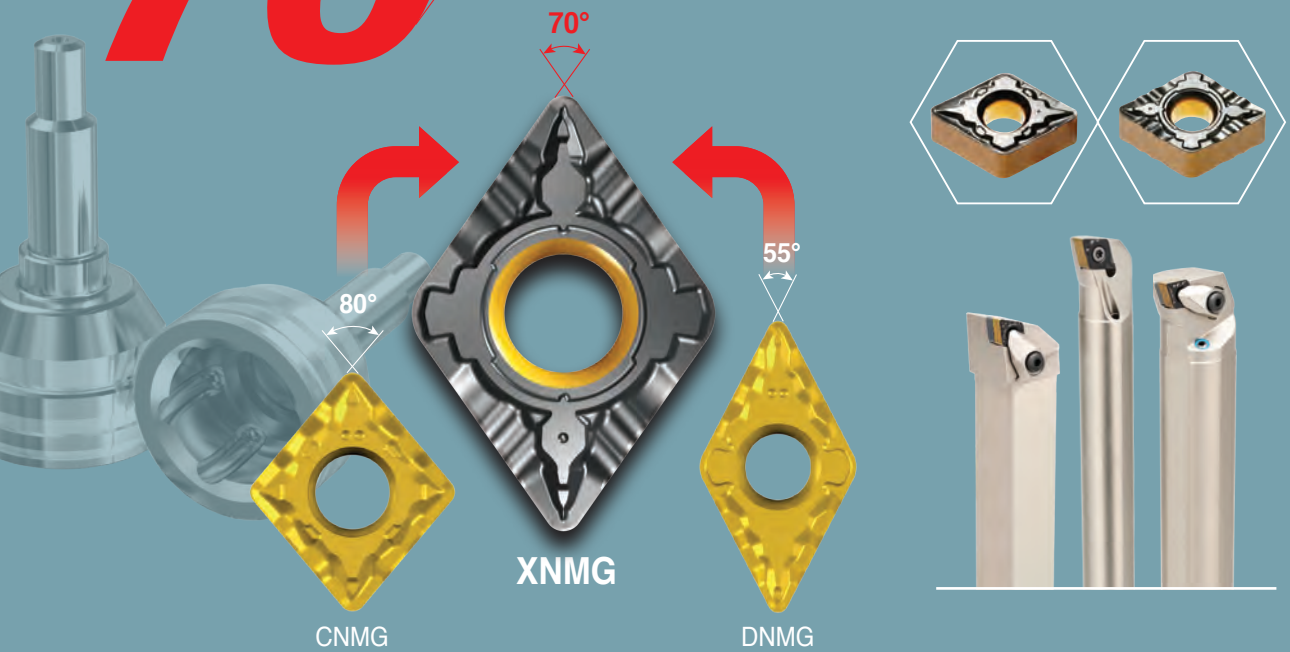


MILLSPEED <small>HIGH FEED MILL</small>	15
TANGSPEED <small>TANGENTIAL MILL</small>	16
CHASE4MILL <small>90° MILLING</small>	17
CHASE8MILL <small>90° FACING & SHOULDERING</small>	18
CHASE10MILL <small>FACE MILLING</small>	19
CHASE4FEED <small>HIGH FEED MILL</small>	20
CHASE12MILL <small>FACE MILLING</small>	21
CHASE4FINISH <small>HIGH FEED MILL</small>	22
MAXIRUSH <small>INDEXABLE SOLID HEADS</small>	23

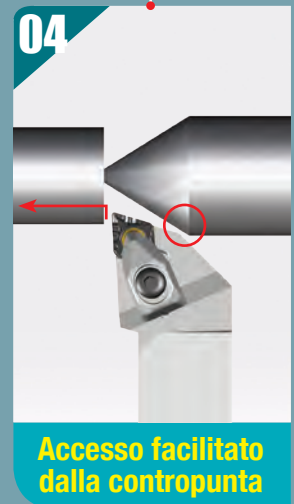
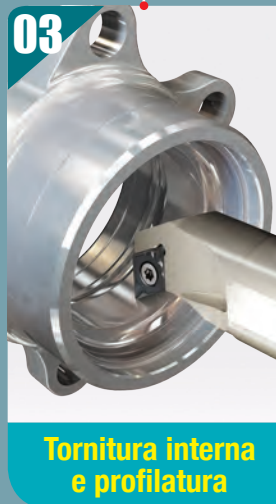
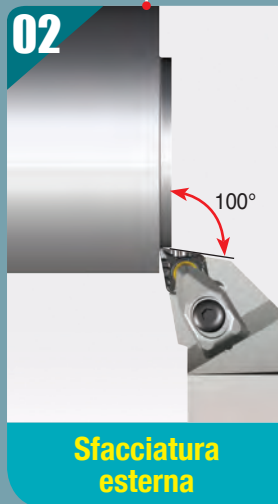
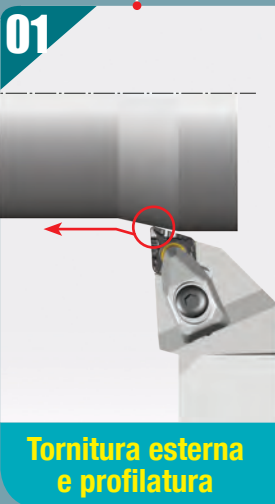


70°

Inserto con angolo a 70° per
torniture multifunzione

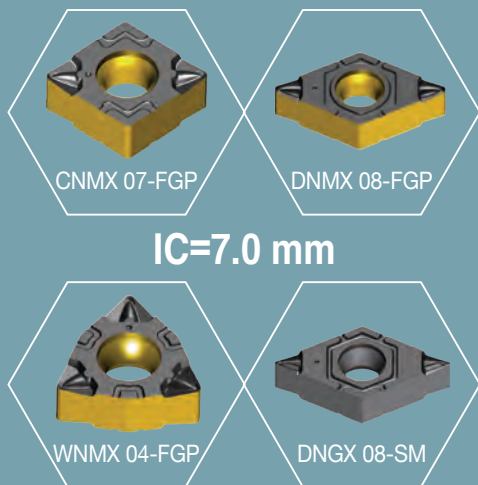


Applicazioni multiple





Mⁱⁿⁱ Inserto bilaterale per torniture a basse profondità inferiori a 2 mm

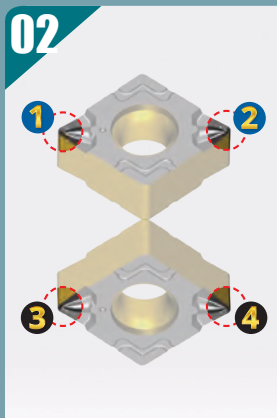


Barenatura di piccoli diametri



Mini inserto

Inserto economico



Bilaterale

Eccellente controllo truciolo



Tagliente affilato

Industria della minuteria

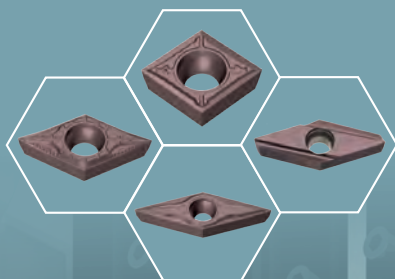


Lavorazione di piccoli pezzi



S Soluzione di tornitura completa per *small* la lavorazione di Piccoli Pezzi

TT4410
TT4430



TMZ



TMB

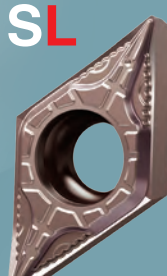
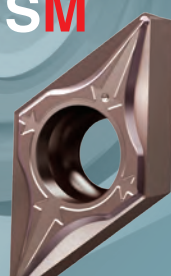
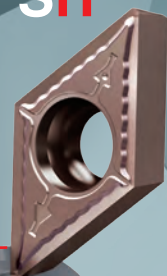
TMS

TMY

SH

SM

SL



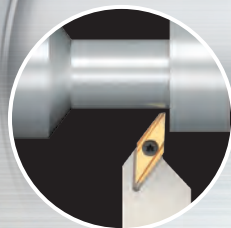
Profondità di taglio

High (Alta)

Medium (Media)

Low (Bassa)

TMB



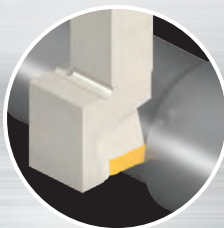
Utensile per
tornitura in tirata

TMS



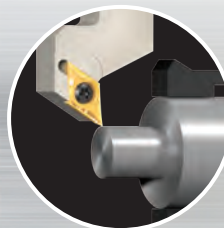
Utensile Sleeve
tipo TB

TMY



Utensile
Y-AXIS

TMZ



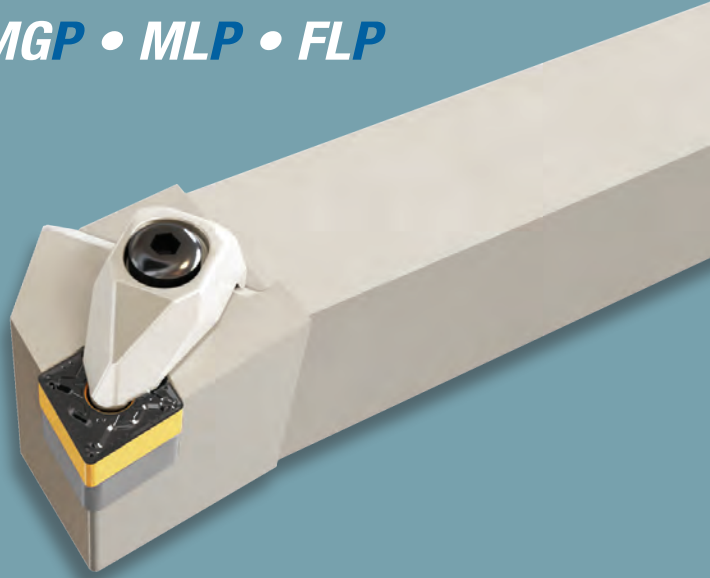
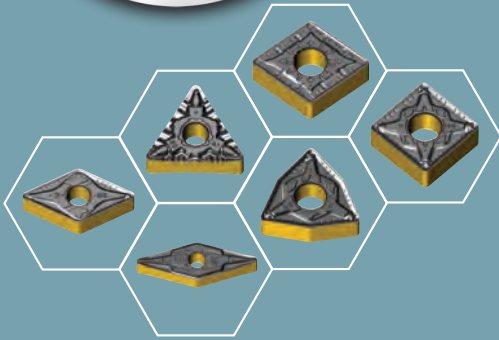
Utensile Shift

T-TURN



Soluzione completa per la tornitura di **acciaio**

RGP • MGP • MLP • FLP



RGP

MGP

MLP

FLP

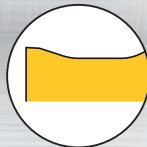
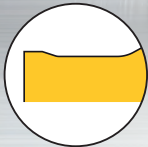
Profondità di taglio

Roughing (sgrossatura)
General cut
(tagliante robusto)

Medium (Lav. medie)
General cut
(tagliante robusto)

Medium (Lav. medie)
Light cut
(taglio dolce)

Finishing (Finitura)
Light cut
(taglio dolce)





Migliori rompitruccioli e gradi per

Heat Resistant Super Alloys

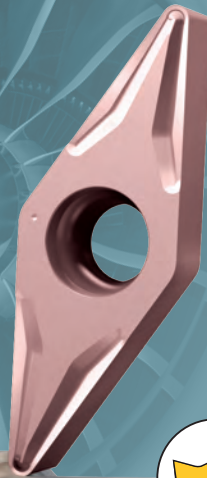
(superleghe resistenti al calore)



MGS



FGS

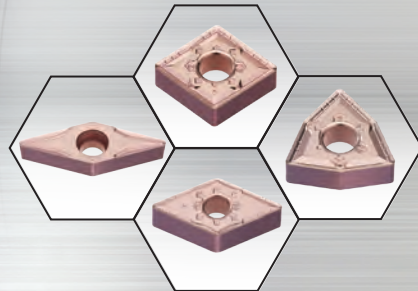
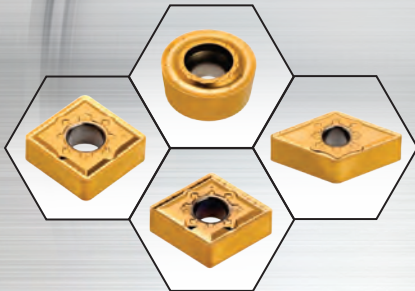


Profondità di taglio



Medium (Lav. medie)
General Cut
Superleghe

Finishing (Finitura)
General Cut
Superleghe



Rivestito PVD TT3020 1^a scelta
TT3010 2^a scelta

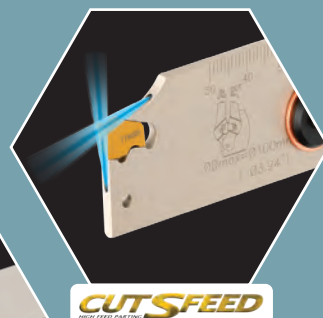
Rivestito CVD TT3005 Per finiture ad alta velocità



P *inpointed* Lubrificazione ad alta pressione direttamente sul tagliente



Lubrificazione da 2 fori:
superiore ed inferiore



Controllo truciolo e durata

Direttamente sul tagliente

Alta produttività

Prestazioni migliorate e stabilità

01

Eccellenti prestazioni

02

Lubrificazione diretta sul punto di taglio

03

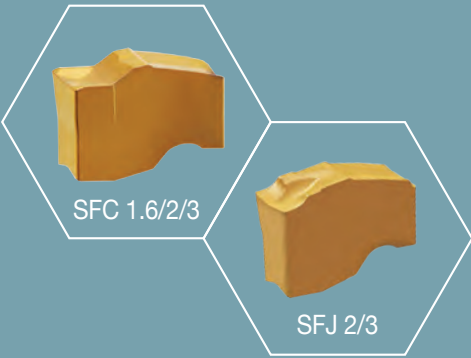
Migliore velocità e avanzamento

04

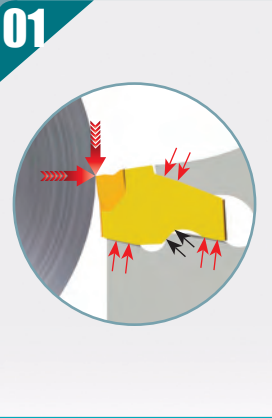
Lavorazione di super leghe



Ultra Stabilità e alta produttività per troncatura e scanalatura profonda



Rinforzato e robusto



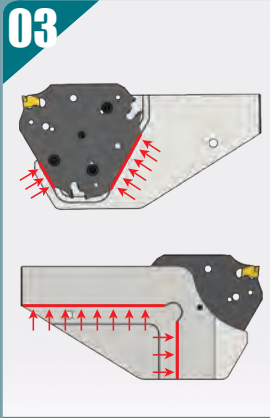
Inserto ultra rigido forte bloccaggio

Lama economica



Lama con 3 sedi inserto

Extra stabilità



Lama e blocco ultra rigidi

Alta produttività

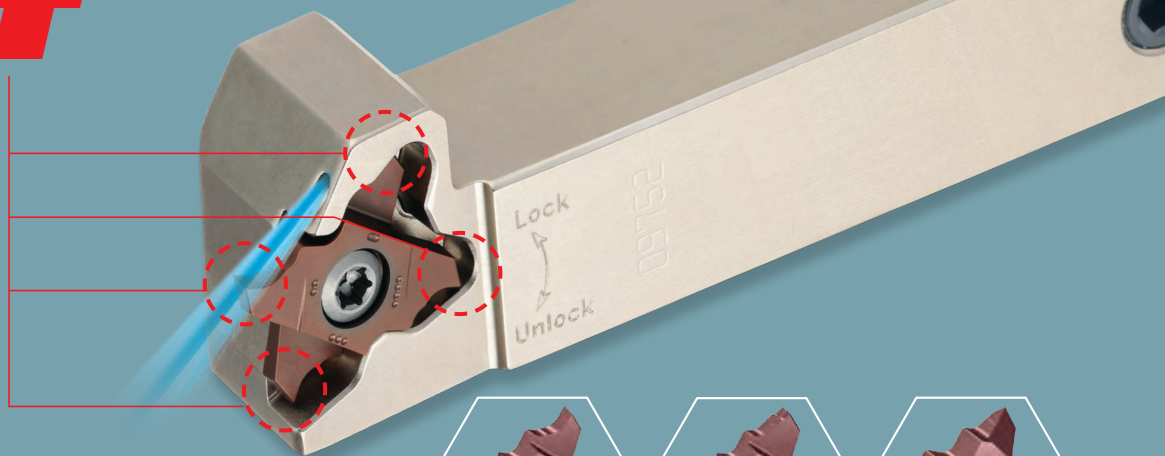


Massimo avanzamento

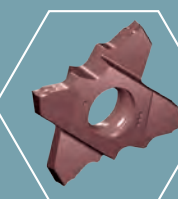
Lavorazioni stabili ad alti avanzamenti



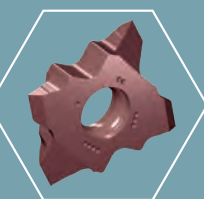
4 Inserto a 4 taglienti per scanalatura per lavorazione di minuterie



TQS 20
0.5/1.0/1.5/2.0/3.0



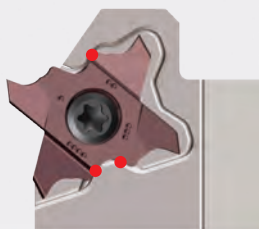
TQJ 20
1.0/1.5/2.0



TQS 20-MT
Threading

Rigido e stabile

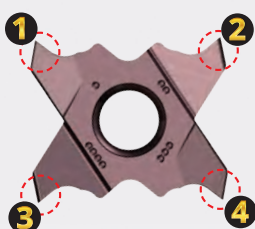
01



Inserto con bloccaggio a vite

Inserto economico

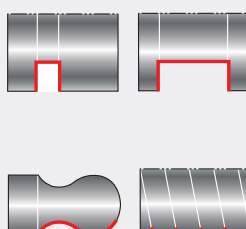
02



4 taglienti

Applicazioni multiple

03



Varie tipologie di inserti

Industria di minuterie

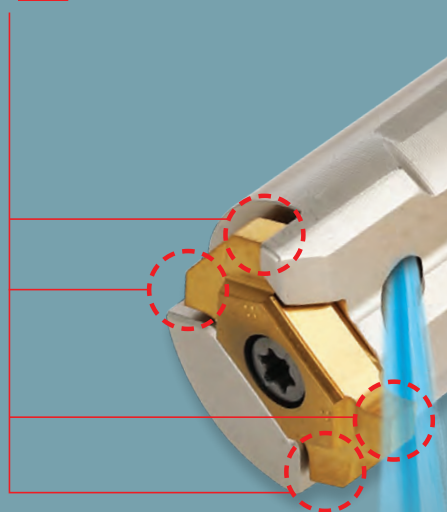
04



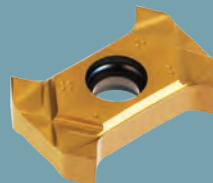
Adatto per macchine svizzere



4 *Inserto con 4 taglienti per scanalatura interna poco profonda*



TQIS 14
1.5/2.0/2.5/3.0

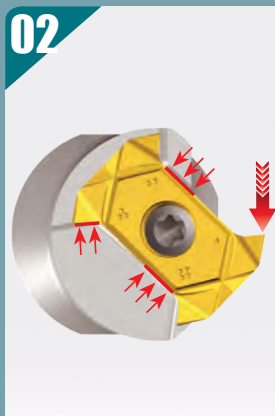


Inserto economico



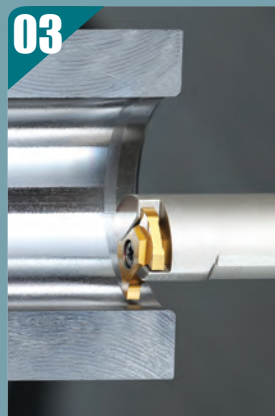
4 taglienti

Rigido e stabile



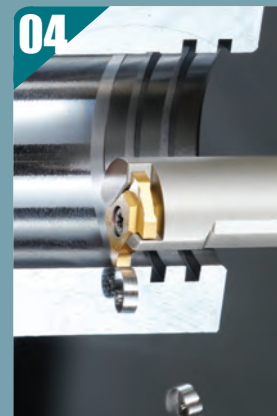
Inserto con bloccaggio a vite

Scanalatura interna poco profonda



Min. diametro ingresso foro di 16,5 mm

Eccellente controllo truciolo e ottima finitura



Rompitruciolo positivo

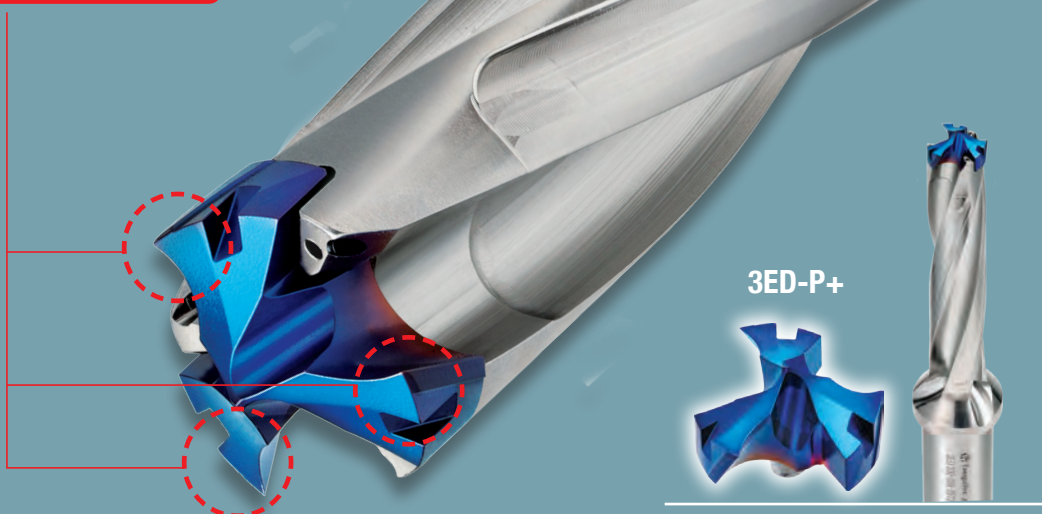
DRILLSPEED

INDEXABLE 3 FLUTE



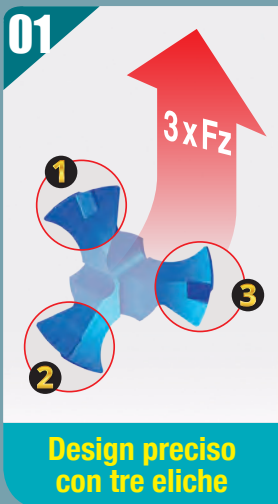
3

*Punta a cuspidi intercambiabile
con 3 taglienti effettivi*

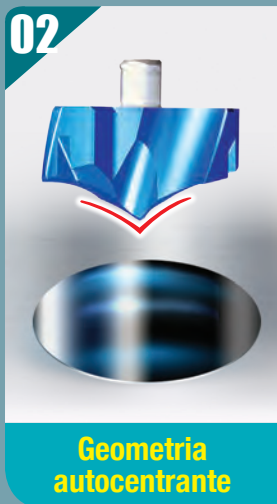


3ED-P+

**Alta
Produttività**



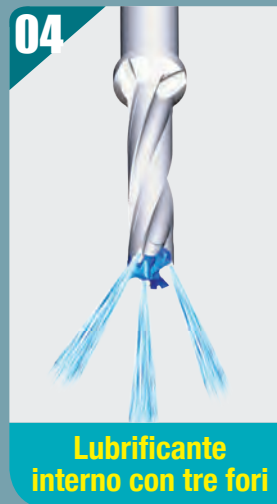
**Eccellente
qualità del foro**



Cambio rapido

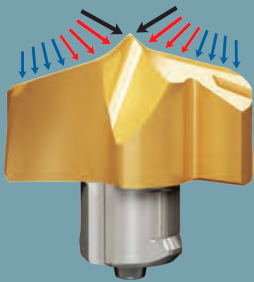


**Migliore
evacuazione
truciolo**





P+ *Cuspide autocentrante per una eccellente precisione di foratura*



TCD-P+



Eccellente qualità foro

01

Tagliante autocentrante

Alta produttività

02

P Pre-foro
2 processi di foratura

P+
1 processo di foratura

Non necessita di pre-foro

Minor tempo per il setup

03

Cambio cuspide in macchina

Fino a 12xD

04

Adatta per forature profonde



Fresa per spallamento a **90°** per lavorazioni di minuteria da 6 a 14 mm di diametro



Alta Produttività



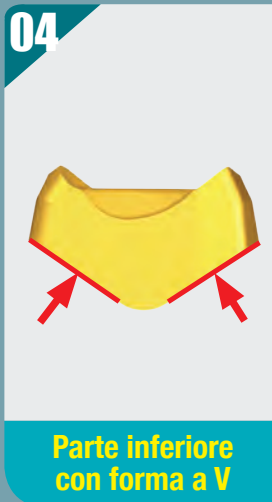
Riduzione dei costi



Il più piccolo inserto



Robusto e affidabile





Tangential Inserto tangenziale super positivo per spallamento a 90°

LPK(H)U



Inserto robusto ed affidabile



Inserto tangenziale

Alta Produttività



Ø16mm
Z=4 denti

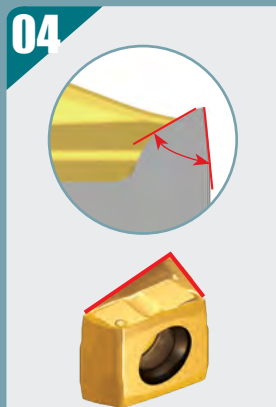
Nucleo più grande maggior n. di denti

L'inserto più piccolo



LPK(H)U 05

Ridotte forze di taglio



Angolo di spoglia super positivo

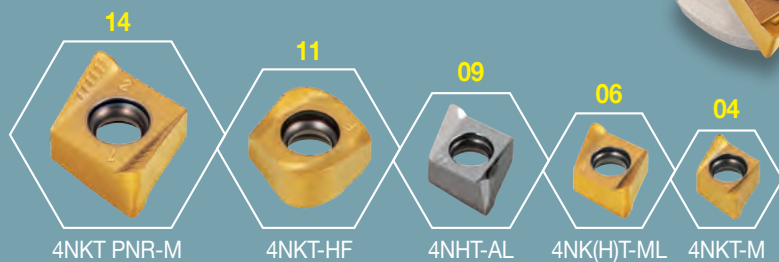
CHASE4MILL

90° MILLING



Inserto con 4 taglienti per spallamento a

True 90° dal design innovativo



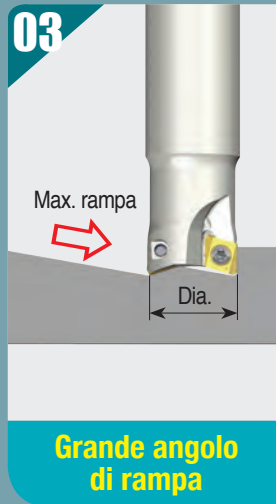
Maggiore economicità



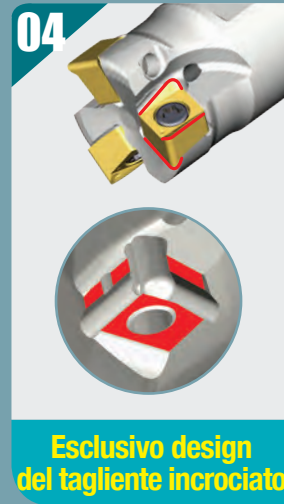
Altissima Produttività



Maggiore Produttività



Sede inserto molto stabile



CHASE8MILL

90° FACING & SHOULDERING

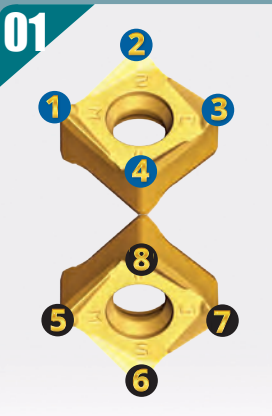


8

Inserto quadro a 8 taglienti
per **spallamento a 90°**



La fresa più
economica per
spallamenti



**Bilaterale
8 taglienti**

Ottima finitura
superficiale



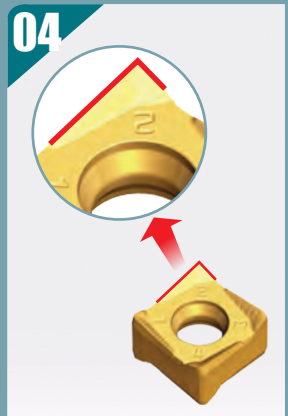
**Spallamento con
tratto Wiper**

Maggiore
Produttività



Passo super fine

Sforzi di taglio
ridotti



**Tagliente
super positivo**



10

Inserto a 10 taglienti per spianatura e alto avanzamento



PTKU

Maggiore Economicità



Inserto bilaterale a 10 taglienti

Ridotte scorte di magazzino



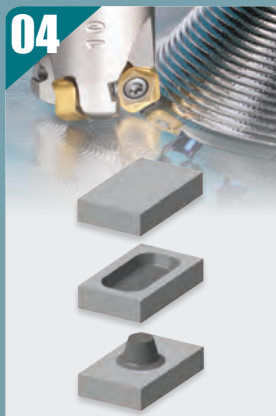
Vari tipi di frese

Lavorazioni dolci e stabili



Angolo di spoglia positivo

Varie Applicazioni



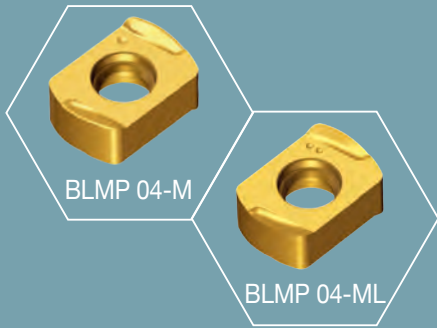
Multifunzionale

CHASE4FEED

HIGH FEED MILL



High Feed Fresatura ad altissimi
avanzamenti con il piccolo
inserto **BLMP 04**



**Il più piccolo
inserto per alti
avanzamenti**

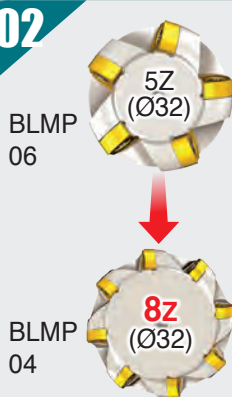
01



**Robusto inserto
bilaterale**

**Alta
Produttività**

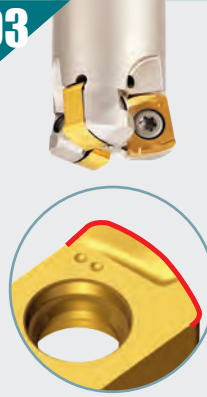
02



**Più denti per
maggiore avanz.**

**Lavorazione
dolce**

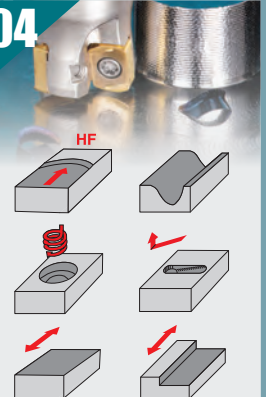
03



**Tagliente
super positivo**

**Varie
Applicazioni**

04



Multifunzionale



12

Inserto a 12 taglienti per
alta produttività in sgrossatura



Maggiore Economicità



Inserto bilaterale a 12 taglienti

Alta Produttività



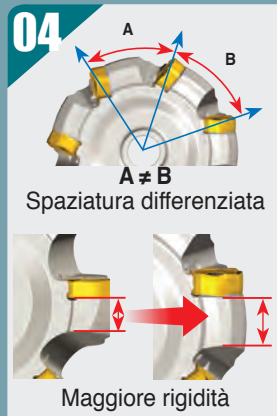
Fresa a passo super fine

Lavorazione dolce e stabile



Angolo di taglio positivo

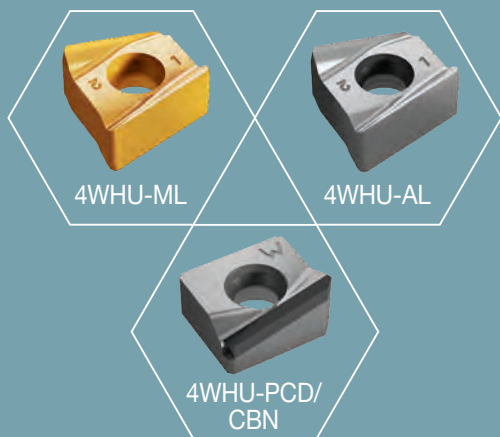
Minime Vibrazioni



Design ottimizzato

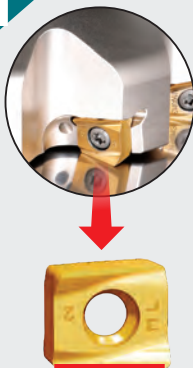


Super Finishing Fresa per super finitura con sedi inserti fisse



Eccellente finitura superficiale

01



Tagliante Wiper molto lungo

Nessun Set-up

02



Esclusivo posizionamento dei taglianti

Lavorazione dolce

03



Tagliante super positivo

Maggiore Economicità

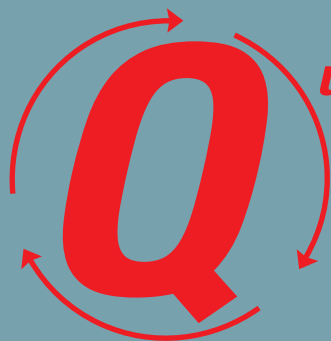
04



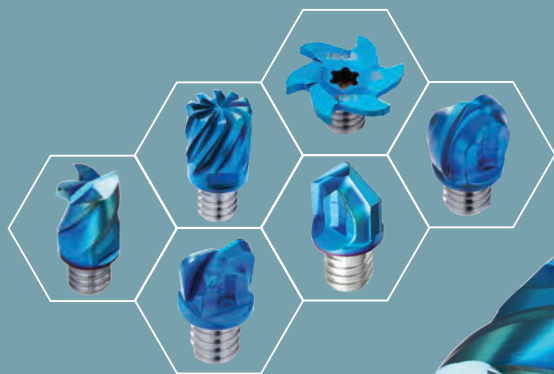
Inserto Wiper a 4 taglianti

MAXIRUSH

INDEXABLE SOLID HEADS



Quick Testine di fresatura
a cambio rapido



**Alta
Produttività**



01

**Rapido
cambio cuspidi**

**Eccellente
precisione**



02

**Bloccaggio
rigido e preciso**

**Applicazioni
multiple**



03

**Vasta gamma di
cuspidi e steli**

**Grado
ottimizzato**



04

TT5543 TT5523

**Rivestimento di
ultima generazione**

TaeguTec Global Network

World Headquarters

TaeguTec Ltd.

1040 Gachang-ro, Gachang-myeon,
Dalseong-gun, Daegu, 42936, Korea
Tel: +82-53-760-7640
Web: <http://www.taegutec.com>

Argentina

TaeguTec Argentina SA
11 de septiembre 4237- Piso 7
(C1429BJC) Ciudad Autónoma
Buenos Aires, Argentina
Tel: +54-11-4702-6222
E-mail: ventas@taegutec.com.ar

Australia

TaeguTec Tools Pty Ltd.
42/7 Hoyle Avenue,
Castle Hill, NSW 2154, Australia
Tel: +61-2-8624-9678
E-mail: sales@taegutec.com.au

Belarus Rep.

Twing-M ALC
Slutskaya str 3, Minsk Area, 223056,
Village Senitsa, Republic of Belarus
Tel: +375-17-506-3238
E-mail: info@twing.by

Brazil

TaeguTec Do Brasil LTDA.
Rua Francisco Foga 500, 13288166
Dist Ind Benedito Storani, Vinhedo, Brazil
Tel: +55-11-3868-6032
E-mail: vendas@taegubrasil.com.br

Bulgaria

Tekotek BG Ltd.
Alexandro Stamboliyski No 31,
7700 Targovishte, Bulgaria
Tel: +359-878-05-1818
E-mail: tekotekbg@gmail.com

Chile

Cutting Tools Chile SpA
Alcalde Pedro Alarcón N° 765,
San Miguel, Santiago - Chile
Tel: +56-2-553 6944
E-mail: ventas@cuttingtools.cl

China

**TaeguTec Cutting Tools Trading
(Shanghai) Co., Ltd.**
RM 1706, T1 Building, Global Creative
Center, No. 166 Minghong RD, Minhang
District, Shanghai, China
Zip Code : 201102
Tel: +86-21-5106-1260
E-mail: mail@taegutec.com.cn

Croatia

Intehna Zagreb D.O.O.
Samoborska cesta 255, 10090
Zagreb-Susedgrad, Croatia
Tel: +385-1-3436-919
E-mail: info@intehna.hr

Czech Rep.

TaeguTec CR S.R.O.
Domažlická 180a, CZ-31800 Plzeň,
Czech Rep.
Tel: +420-373-720-999
E-mail: top@taegutec.cz

Denmark

TaeguTec Scandinavia A/S.
Hollandsvej 12, Room 206
DK-2800 Kgs. Lyngby, Denmark
Tel: +45-7022-0103
E-mail: ts@taegutec.dk

Finland

Knorrning OY AB
Mestarintie 4 FI-01730 Vantaa, Finland
Tel: +358-9-560-41
E-mail: knorrning@knorrning.fi

France

Ingersoll France
22 Rue Albert Einstein
77420 Champs Sur Marne, France
Tel: +33 (0)1-64-68-45-36
E-mail: info@ingersoll-ime.fr

Germany

Ingersoll Werkzeuge GmbH
Kalleiche Ring 21-25, D-35708
Haiger, Germany
Tel: +49-2773-742 146
E-mail: info@ingersoll-IMC.de

Greece

Technotools-Fakitsas Georgios Co.
25th Martiou & Thrakis 15, 15235 Vrillissia,
Athens, Greece
Tel: +30-2-10-832-0752
E-mail: Giorgos@technotools.gr

Hungary

TaeguTec Hungary KFT.
1142 Budapest, Kassai u.151.
Tel: +36-1-273-29-55
E-mail: info@taegutec.hu

India

TaeguTec India Pvt. Ltd.
No.120, Bommasandra Industrial Area,
Phase IV, Bangalore-560 099, India
Tel: +91-80-4901-3000
E-mail: sales@taegutec-india.com

Indonesia

PT. TaeguTec Indonesia
Easton Commercial Center
Jl. Gunung Panderman Blok B no. 12
Cikarang Selatan-Bekasi 17550, Indonesia
Tel: +62-21-29093176/78
E-mail: sales@taegutec.co.id

Ireland

Hardmetal Machine Tools Ireland Ltd.
Dargan House, Duncairn Terrace,
Bray Co. Wicklow, Ireland
Tel: +353-1-286-2466
E-mail: sales@hardmetal.ie

Italy

Ingersoll TaeguTec Italia S.R.L.
Via Monte grappa N.78, 20020 Arese (MI), Italy
Tel: +39 02.99.76.67.00
E-mail: taegutec@taegutec.it

Japan

TaeguTec Japan Ltd.
Senri Asahi Hankyu Bldg. 20F
1-5-3 Shinsenri-Higashimachi
Toyonaka-shi Osaka 560-0082, Japan
Tel: +81-6-6835-7731
E-mail: taegutec@taegutec.co.jp

Lithuania

UAB TTMT
Paneriu Str. 5 LT-48337 Kaunas, Lithuania
Tel: +370-37-328487
E-mail: sigitas@ttmt.lt

Malaysia

**TaeguTec Tooling Systems
Malaysia Sdn. Bhd**
No.23-1&2, Jalan Anggerik Vanilla
BF 31/BF Kota Kemuning, Seksyen 31
40460 Shah Alam Selangor D.E., Malaysia
Tel: +603-5131-7514
E-mail: info@taegutec.com.my

The Netherlands

TCE Tools
Kennedylaan 14, 5466 AA, Veghel,
The Netherlands
Tel: +31 (413) 38 83 10
E-mail: info@tce-tools.nl

New Zealand

TaeguTec Pacific Ltd.
1/501 Mt. Wellington Highway
Sylvia Park, Auckland, New Zealand 1060
Tel: +64-0800-808-477
E-mail: sales@iscar.co.nz

Norway

Svea Service AS
Graeterudveien 20 No-3036 Drammen,
Norway
Tel: +47-32-277-750
E-mail: per.martin.bakken@svea.no

Pakistan

Dynamic Tooling Services
Office No. 304, 3rd Floor, Azeem
Mansion, Fazal-ul-Haque Road,
Blue Area, Islamabad-44000, Pakistan
Tel: +92-51-2150382/383
E-mail: info@dts.com.pk

Peru

Trade Tools Cia. S.A.C.
Av. Guillermo Dansey No 774
Urb. Lima Industrial, Lima Peru 4000.
Tel: +51-01-433-6999
E-mail: purchases@tradetools.com.pe

Philippines

Colt Commercial Inc.
Suite 508 Padilla delos Reyes Bldg,
232 Juan Luna St., Binondo, Manila
Philippines
Tel: +63-2-8244-9757
E-mail: cyrus@colt.com.ph

Poland

TaeguTec Polska Sp. z o.o.
Ul.Nenckiego 136
52-223 Wroclaw, Poland
Tel: +48 71 785 40 85
E-mail: sales@taegutec.pl

Portugal

Hexatool, S.A.
Rua Casal Galego, N°70A
2430-084 Casal Galego
Marinha Grande, Portugal
Tel: +351-244-550424/5
E-mail: hexatool@hexatool.com

Romania

SC TaeguTec Tools SRL
Splaiul Unirii, nr. 4, Bl. B3, 5th Floor,
Office 5.1, District 4., Bucharest,
Romania, 040031
Tel: +4021 210 3108
E-mail: marian.luca@taegutec.ro

Russia

TaeguTec Russia
123290, Russia, Moscow,
2nd Magistralnaya str, 8A, building 5
Tel: +7-495-269-7917
E-mail: sales@taegutec.ru

Saudi Arabia

Khusheim Co.
Building - A, Al Nakheel Tower, Al Khaleej
Road, Al Shatee Area, Dammam 31411,
Kingdom of Saudi Arabia
Tel: +966-13-8333574 Ext : 1500
E-mail: bd@khusheim.com

Serbia

Intehna Beo D.O.O.
Autoptut 22, 11080 Zemun, Serbia
Tel: +381-11-3149-092
E-mail: info@intehna.rs

Singapore

TT Tooling Systems
BK502, #03-823, Jurong West Avenue 1,
Singapore 640502
Tel: +65-6-4254918
E-mail: kltan@sinotool.com.sg

Slovakia

TaeguTec Slovakia, s.r.o.
Bytčická 2/44 010 01 Žilina Slovak Republic
Tel: +386-1-580-9260
E-mail: info@taegutec.sk

Slovenia

Intehna D.O.O.
Špruha 40, Si-1236, Trzin, Slovenia
Tel: +386-1-580-9260
E-mail: info@intehna.si

South Africa

TaeguTec South Africa (Pty) Ltd.
Block F, Clearwater Office Park,
Corner of Atlas and Park Roads,
Parkhaven, Boksburg 1459, South Africa
Tel: +2711-362-1500
E-mail: info@taegutec.co.za

Spain

TaeguTec Spain S.L.U
Miquel Servet, 35 P.I.Buvalvent
08243 Manresa (Barcelona), Spain
Tel: +34-93-878-7309/7310
E-mail: info@taegutec.es

Sweden

SMV Verktyg AB
Parkgatan 6
SE-303 31 Smalandsstenar, Sweden
Tel: +46-371-343-40
E-mail: verktyg@smv.se

Taiwan

Qunling International Trading Co.,Ltd.
RM B, 7F, No. 801 of Zhongzheng Road,
Zhonghe District, New Taipei City 23552,
Taiwan
Tel: +886-2-2223-0851
E-mail: qunling.service@qunling.url.tw

Thailand

TaeguTec(Thailand) Co.,Ltd.
6/177 M.7 Srinakarín Rd.,
T.Bangmuang, A.Muangsamutprakarn,
Samutprakarn 10270, Thailand
Tel: +66-2-759-9300/9172
E-mail: info@taegutec-thai.co.th

Turkey

TaeguTec Kesici Takimlar A.S.
TOSB Otomotiv Yan Sanayi Ihtisas
Organize Sanayi Bolgesi
1.Cad. 15.Sokak No:9 41420 Şekerpınar
Çayyírova/KOCAELI, Türkiye
Tel: +90-850-201-6900
E-mail: info@taegutec.com.tr

Ukraine

TaeguTec Ukraine LLC
40-b, Pushkina avenue, Dnepropetrovsk
Ukraine, 49006
Tel: +38-056-790-84-09
E-mail: td@taegutec.com.ua

United Kingdom

TaeguTec UK Ltd.
Waterside, Grange Park, Wetherby,
Leeds, LS22 5NB, United Kingdom
Tel: +44-1937-589-828
E-mail: info@taegutec.co.uk

U.S.A.

Ingersoll Cutting Tools
845 S Lyford Road Rockford,
IL 61108-2749, U.S.A.
Tel: +1-815-387-6600
E-mail: info@ingersoll-ime.com

Vietnam

TaeguTec Vietnam Limited Liability
3rd Floor, Intan Building, 97 Nguyen
Van Troi Street, Ward 12, Phu Nhuan Dist,
HCMC, Vietnam.
Tel: +84-28-3999-1835
E-mail: info@taegutec.vn



6227804

- Cat.No: 6227804
- English Version: CT 01/2021
- ©TaeguTec LTD.



TaeguTec
Member IMC Group