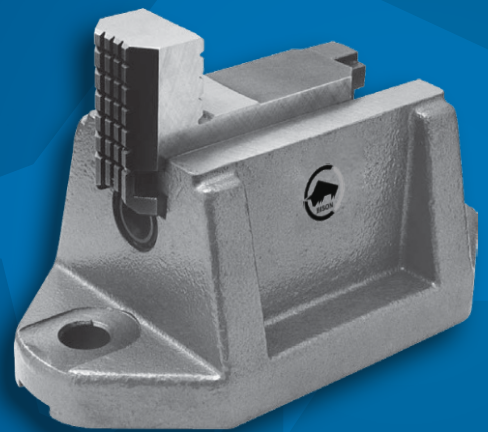
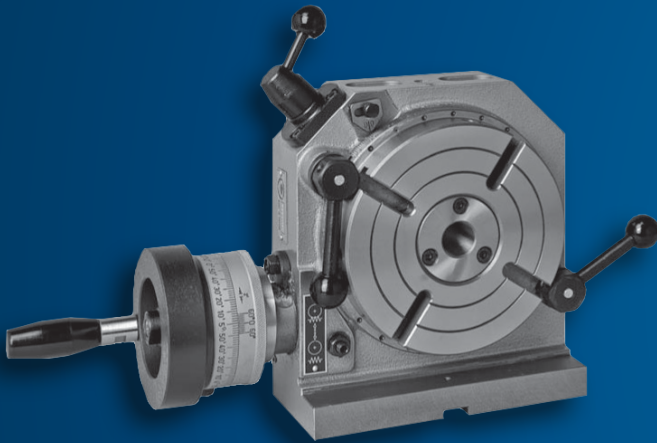
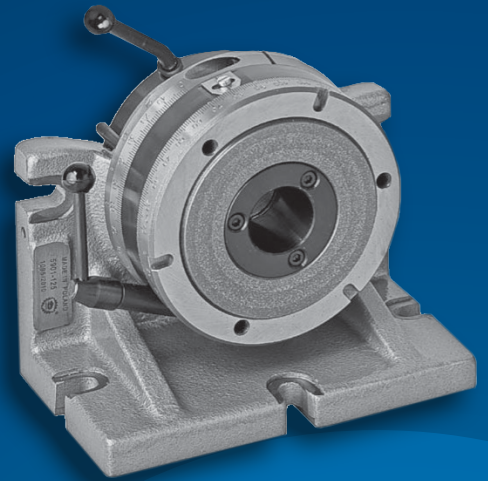
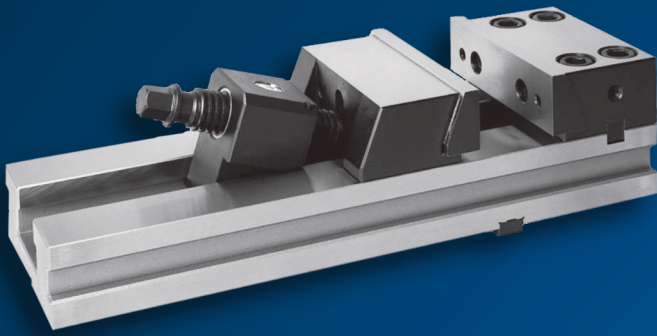




BISON

VICES AND INDEXING FIXTURES



BISON

1

MANDRINI MANUALI E AUTOMATICI MANUAL AND POWER CHUCKS

2

CONTROPUNTE FISSE E ROTANTI FIXED AND LIVE CENTRES

3

MORSE E DIVISORI VICES AND INDEXING FIXTURES

(MORSE, DIVISORI, TAVOLE GIREVOLI, TARTARUGHE, ACCESSORI, DATI TECNICI)

(VICES, INDEXING FIXTURES, ROTARY TABLES, BOX JAWS, ACCESSORIES, TECHNICAL INFO)

4

MANDRINERIA SPINDLE TOOLING

TUTTO PER IL TORNIO MANUALE EVERYTHING FOR THE MANUAL LATHE

MANDRINO MANUALE (AUTOCENTRANTE, INDIPENDENTE, COMBINATO)
MANUAL CHUCK (SELF-CENTERING, INDEPENDENT, COMBINED)

1

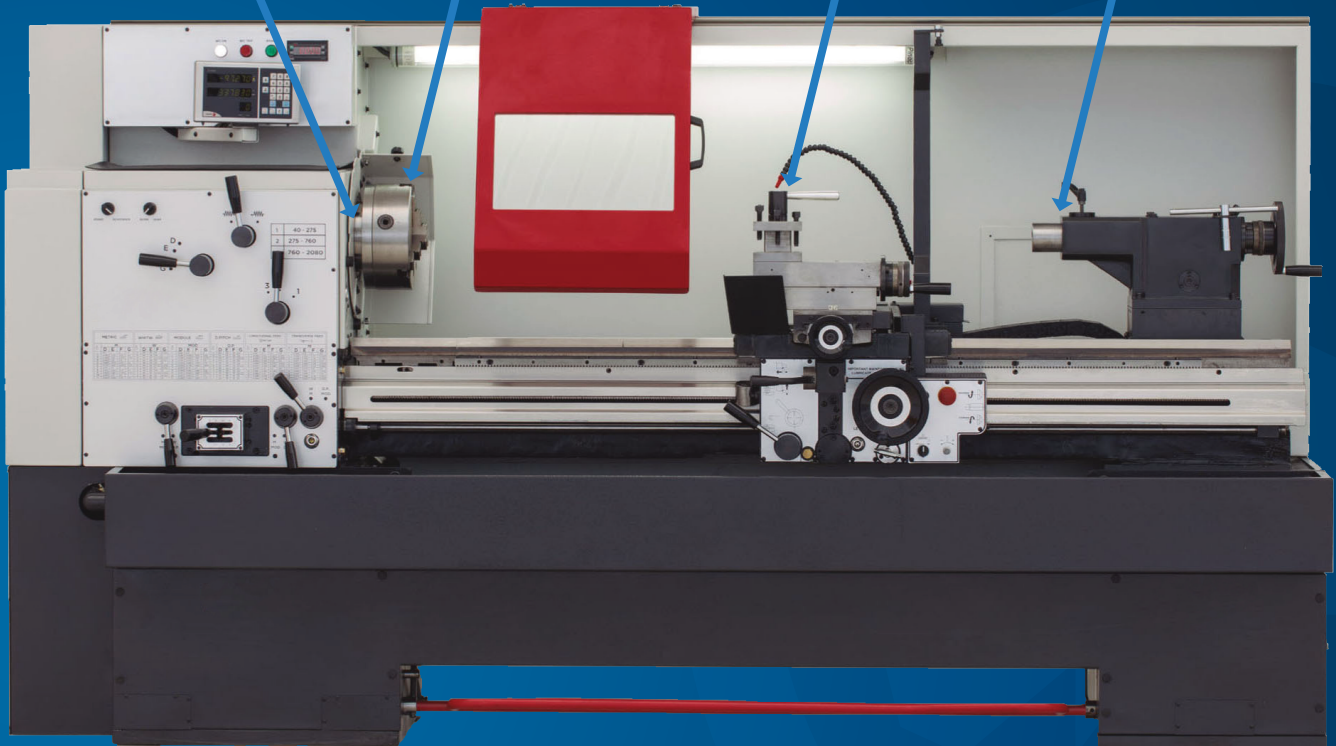
1 **FLANGIA**
ADAPTER PLATE

TORRETTA PORTAUTENSILE A CAMBIO RAPIDO
QUICK-CHANGE TOOLPOST

4

CONTROPUNTE
CENTERS

2



2 ANNI DI GARANZIA
2 YEAR WARRANTY

TUTTO PER IL TORNIO CNC EVERYTHING FOR THE CNC LATHE

**MANDRINO (AUTOCENTRANTE MANUALE / AUTOMATICO, INDIPENDENTE, COMBINATO)
CHUCK (POWER / MANUAL SELF-CENTERING, INDEPENDENT, COMBINED)**

1

1

**FLANGIA
ADAPTER PLATE**

**MANDRINERIA
SPINDLE TOOLING**

4



**CONTROPUNTE
CENTERS**

2

**2 ANNI DI GARANZIA
2 YEAR WARRANTY**

TUTTO PER LA FRESA A 3 ASSI

EVERYTHING FOR THE 3-AXIS MILLING MACHINE

MANDRINERIA
SPINDLE TOOLING **4**

MANDRINERIA
SPINDLE TOOLING **4**



MORSE / DIVISORI
VICES / INDEXING FIXTURES **3**

1 **MANDRINO (AUTOCENTRANTE, INDIPENDENTE, COMBINATO)**
MANUAL CHUCK (SELF-CENTERING, INDEPENDENT, COMBINED)

2 ANNI DI GARANZIA
2 YEAR WARRANTY

TUTTO PER LA FRESA A 5 ASSI

EVERYTHING FOR THE 5-AXIS MILLING MACHINE



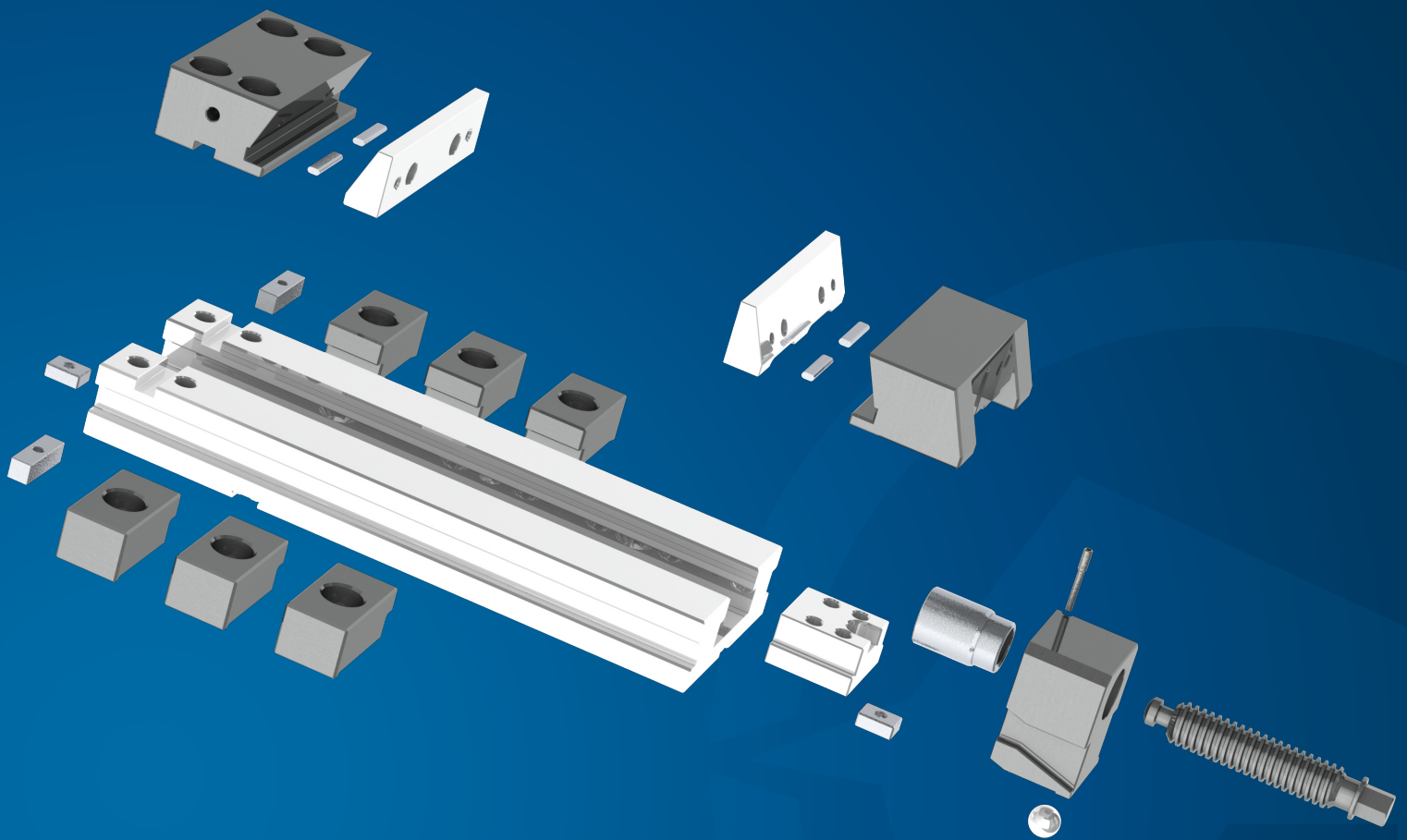
MANDRINERIA
SPINDLE TOOLING **4**

1 **MANDRINO (AUTOCENTRANTE, INDIPENDENTE, COMBINATO)**
MANUAL CHUCK (SELF-CENTERING, INDEPENDENT, COMBINED)

MORSE
VICES **3**

2 ANNI DI GARANZIA
2 YEAR WARRANTY

MORSE VICES



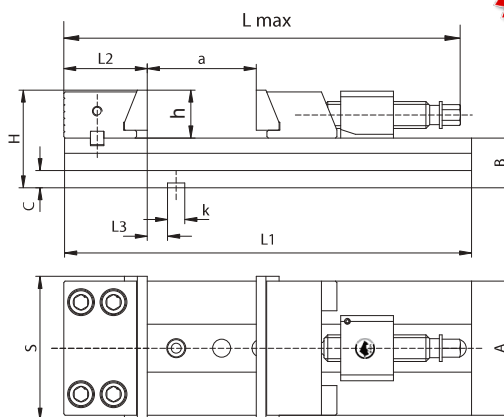
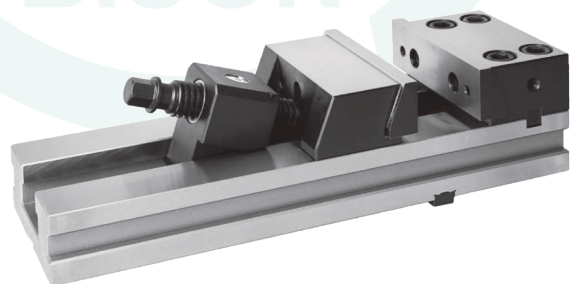
MORSA DI PRECISIONE

PRECISION VICE

GANASCIA FISSA REVERSIBILE, GANASCIA MOBILE REGOLABILE
REVERSIBLE FIXED JAW, ADJUSTABLE MOVABLE JAW

ACCIAIO TEMPRATO E BILANCIATO
TEMPERED AND BALANCED STEEL

6620



**NEW
PRICE**

S	B (-0,02)	L1	a	h	k	COPPIA SULLA CHIAVE (Nm) TORQUE ON THE WRENCH (Nm)	FORZA DI SERRAGGIO MAX (daN) MAX CLAMPING FORCE (daN)	KG
100	35	320	165	30	12	40	2000	9.8
125	42	335	165	40	12	60	3000	15.7
150	52	425	210	50	18	120	4100	32
150	52	475	260	50	18	120	4100	35.2
150	52	520	305	50	18	120	4500	37
200	61	535	260	60	18	170	4500	59
200	61	585	310	60	18	170	4500	61.7
200	61	635	360	60	18	170	4500	64.4

ACCESSORI ACCESSORIES

6586
BASE GIREVOLE
SWIVEL BASE



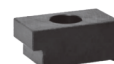
OB
SUPPORTO
BLOCK



GANASCE
JAW INSERTS



LD
STAFFE DI FISSAGGIO
CLAMPS



SP
VITE DI COMANDO
OPERATING SCREW



6597
BATTUTA LATERALE
SIDE STOP



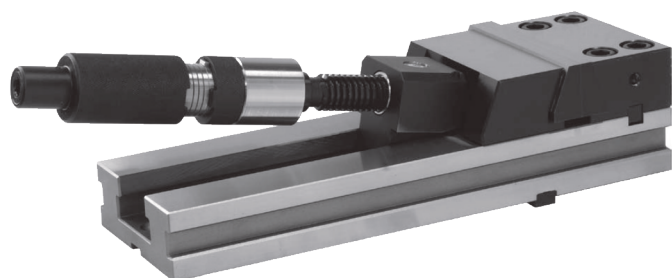
MORSA DI PRECISIONE CON VITE IDRAULICA

PRECISION VICE WITH HYDRAULIC SPINDLE

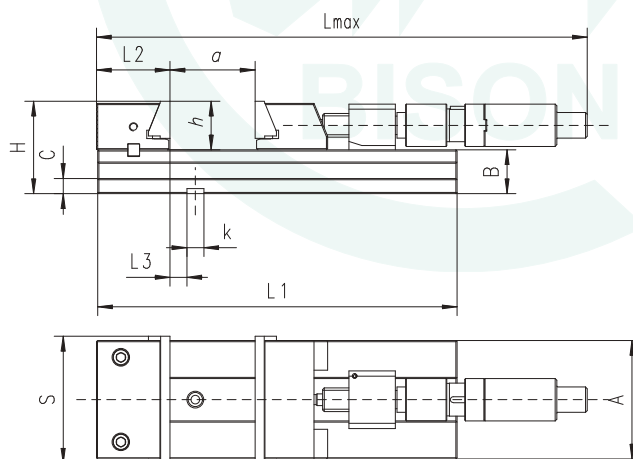
GANASCIA FISSA REVERSIBILE, GANASCIA MOBILE REGOLABILE
REVERSIBLE FIXED JAW, ADJUSTABLE MOVABLE JAW

**NEW
PRICE**

6621



ACCIAIO TEMPRATO E BILANCIATO
TEMPERED AND BALANCED STEEL



S	B (-0,02)	L1	a	h	k	FORZA DI SERRAGGIO MAX (daN) MAX CLAMPING FORCE (daN)	KG
150	52	425	210	50	18	4100	33.4
150	52	475	260	50	18	4100	36.6
150	52	520	305	50	18	4100	38.4
200	61	535	260	60	18	4500	61.5
200	61	585	310	60	18	4500	64.2
200	61	635	360	60	18	4500	66.9

ACCESSORI ACCESSORIES

6586
BASE GIREVOLE
SWIVEL BASE



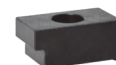
OB
SUPPORTO
BLOCK



GANASCE
JAW INSERTS



LD
STAFFE DI FISSAGGIO
CLAMPS



SP
VITE DI COMANDO
OPERATING SCREW



6597
BATTUTA LATERALE
SIDE STOP



3960-MN
VITE IDRAULICA
HYDRAULIC SPINDLE



MORSE MODULARI DI PRECISIONE

PRECISION MODULAR VICES

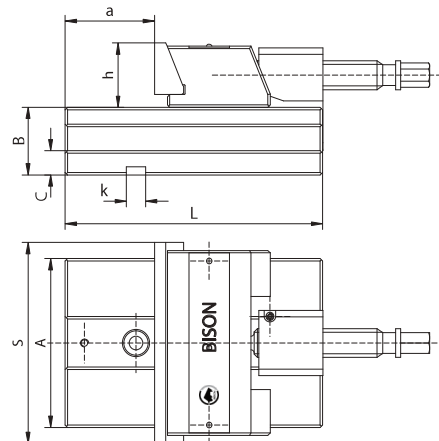
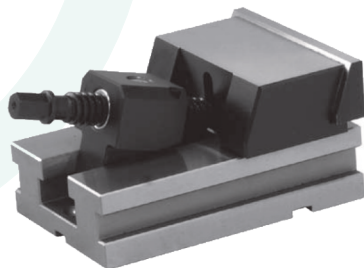
ACCIAIO TEMPRATO E BILANCIATO
TEMPERED AND BALANCED STEEL

**NEW
PRICE**

6622

ELEMENTO MOBILE

MOVABLE ELEMENT



S	B	L	a	h	k	COPPIA SULLA CHIAVE (Nm) TORQUE ON THE WRENCH (Nm)	FORZA DI SERRAGGIO MAX (daN) MAX CLAMPING FORCE (daN)	KG
100	35	163	48	30	12	40	2000	9.8
125	42	170	60	40	12	60	3000	15.7
150	52	221.5	86	50	18	120	4100	32
200	61	253.5	78	50	18	170	4500	35.2

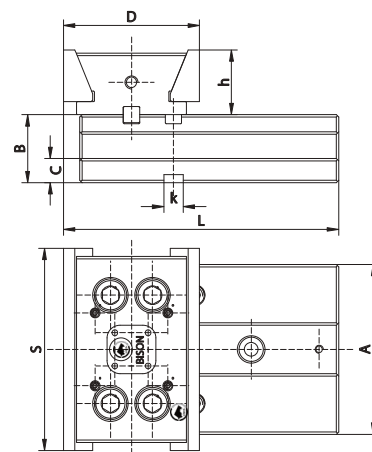
DISPONIBILE VERSIONE CON VITE IDRAULICA **6623** (MISURE 150 E 200)
HYDRAULIC SPINDLE VERSION **6623** AVAILABLE (FOR DIMENSIONS 150 AND 200)

**NEW
PRICE**

6624

ELEMENTO FISSO

FIXED ELEMENT



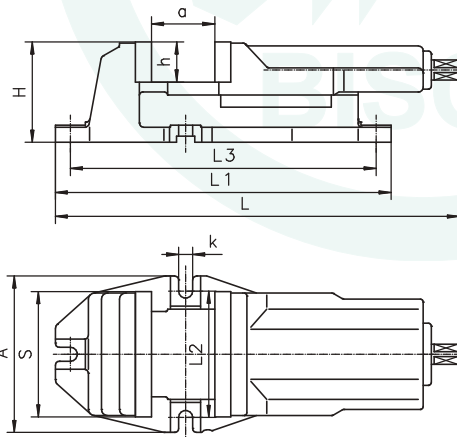
S	B	L	h	k	COPPIA SULLA CHIAVE (Nm) TORQUE ON THE WRENCH (Nm)	FORZA DI SERRAGGIO MAX (daN) MAX CLAMPING FORCE (daN)	KG
100	35	163	30	12	40	2000	9.8
125	42	170	40	12	60	3000	15.7
150	52	221.5	50	18	120	4100	32
200	61	253.5	50	18	170	4500	35.2

MORSA DA MACCHINA MACHINE VICE

CON GANASCIA MOBILE POSTERIORE
WITH REAR MOVABLE JAW

GHISA DI ALTA QUALITÀ
HIGH-QUALITY CAST IRON

6512



S	H	L1	a	h	k	FORZA DI SERRAGGIO MAX (daN) MAX CLAMPING FORCE (daN)	KG
100	84	290	80	32	14	2500	9.9
125	100	335	95	40	14	3500	15.9
160	121	405	125	50	18	4000	29
200	247	500	160	63	18	5000	56
250	174	610	200	80	18	6200	71

DISPONIBILE VERSIONE IDRAULICA **6516** (MISURE 125, 160 E 200)
HYDRAULIC VERSION **6516** AVAILABLE (DIMENSIONS 125, 160 AND 200)

ACCESSORI ACCESSORIES

6582
BASE GIREVOLE
SWIVEL BASE



GANASCE
JAW INSERTS

WSJ



LISCE
SMOOTH

WS



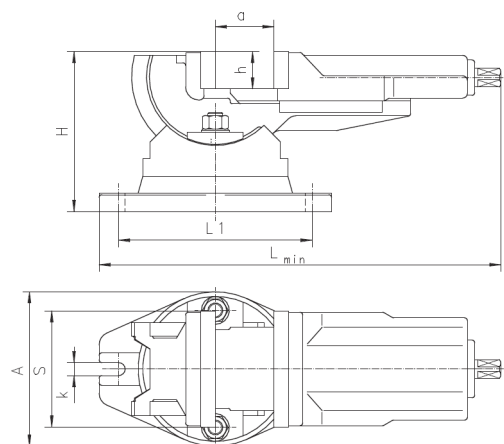
ZIGRINATE
GROOVED

MORSE DA MACCHINA MACHINE VICES

GHISA DI ALTA QUALITÀ
HIGH-QUALITY CAST IRON

6530

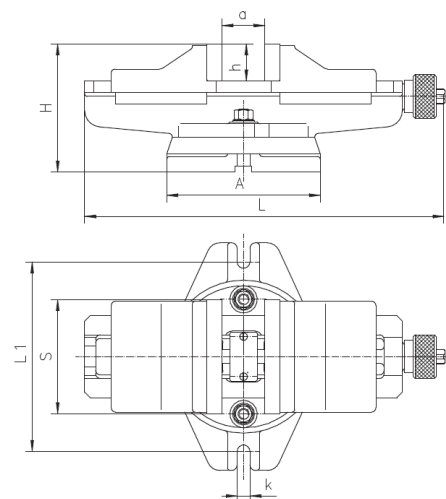
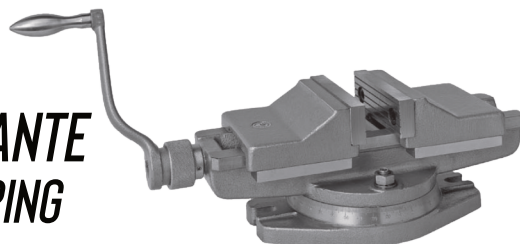
**GIREVOLE A CULLA
TWO-ANGLE SWIVELING**



S	H	L1	a	h	k	FORZA DI SERRAGGIO MAX (daN) MAX CLAMPING FORCE (daN)	KG
100	145	181	80	32	14	2500	12.5
125	169	208	100	40	14	3500	20
160	200	208	125	50	18	4500	34.2

6531

**GIREVOLE AUTOCENTRANTE
SWIVELING SELF-CENTERING**

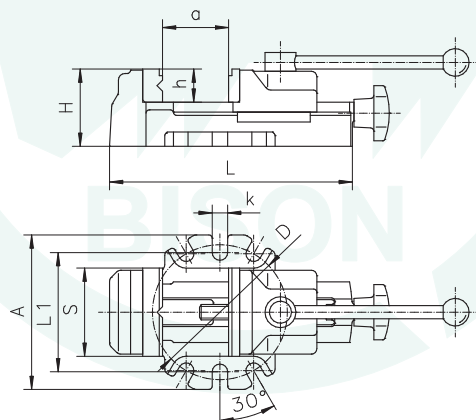
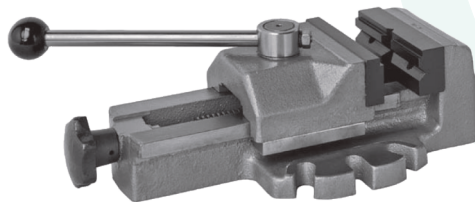


S	H	L1	a	h	k	FORZA DI SERRAGGIO MAX (daN) MAX CLAMPING FORCE (daN)	KG
100	136	208	100	40	14	2500	19.2
125	169	248	125	50	18	4000	33.5
160	193	333	160	63	18	5500	59

MORSA DA MACCHINA MACHINE VICE

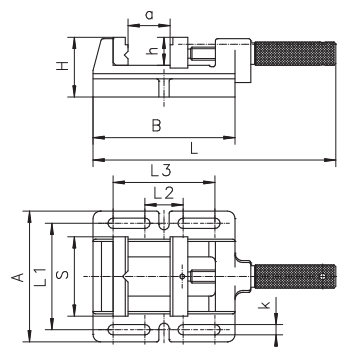
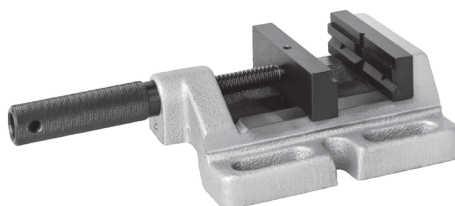
GHISA DI ALTA QUALITÀ
HIGH-QUALITY CAST IRON

6542 SERRAGGIO RAPIDO QUICK CLAMPING



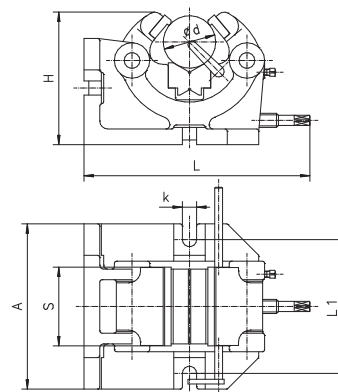
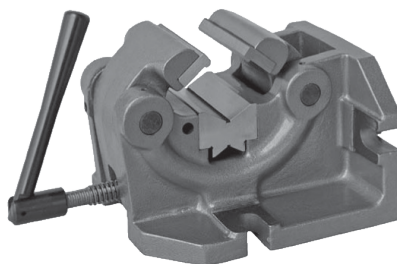
S	H	L1	a	h	k	FORZA DI SERRAGGIO MAX (daN) MAX CLAMPING FORCE (daN)	KG
80	70	108	80	30	14	800	5.2
100	80	133	100	35	14	1200	8.9

6543 MORSA DA TRAPANO DRILLING VICE



S	H	L1	a	h	k	FORZA DI SERRAGGIO MAX (daN) MAX CLAMPING FORCE (daN)	KG
100	64	124	85	30	13	500	4
120	64	148	120	30	13	650	5
150	66	178	150	38	13	800	8.4

6546 MORSA PER TUBI SHAFT-HOLDING VICE



S	H	L	L1	d	k	FORZA DI SERRAGGIO MAX (daN) MAX CLAMPING FORCE (daN)	KG
100	170	287	170	10-63	18	1000	20.9
125	235	389	160	15-100	18	1500	37.8

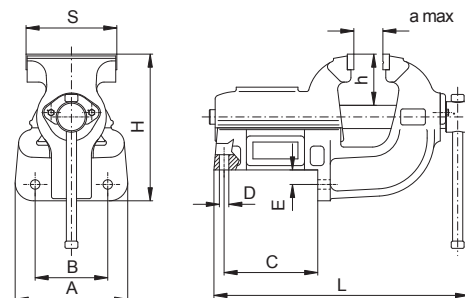
MORSE DA BANCO

BENCH VICES

GHISA DI ALTA QUALITÀ
HIGH-QUALITY CAST IRON

1240

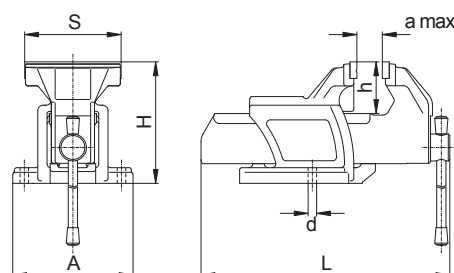
PER CARICHI PESANTI, FISSA
FIXED HEAVY-DUTY BENCH VICE



S	B	L	a	FORZA DI SERRAGGIO MAX (daN) MAX CLAMPING FORCE (daN)	KG
80	85	250	100	2000	6.8
100	85	250	100	2400	7.4
125	100	354	140	2800	18
150	125	437	175	3600	31
175	125	437	175	4000	32
200	150	585	250	4300	59
250	150	585	250	4500	61.5

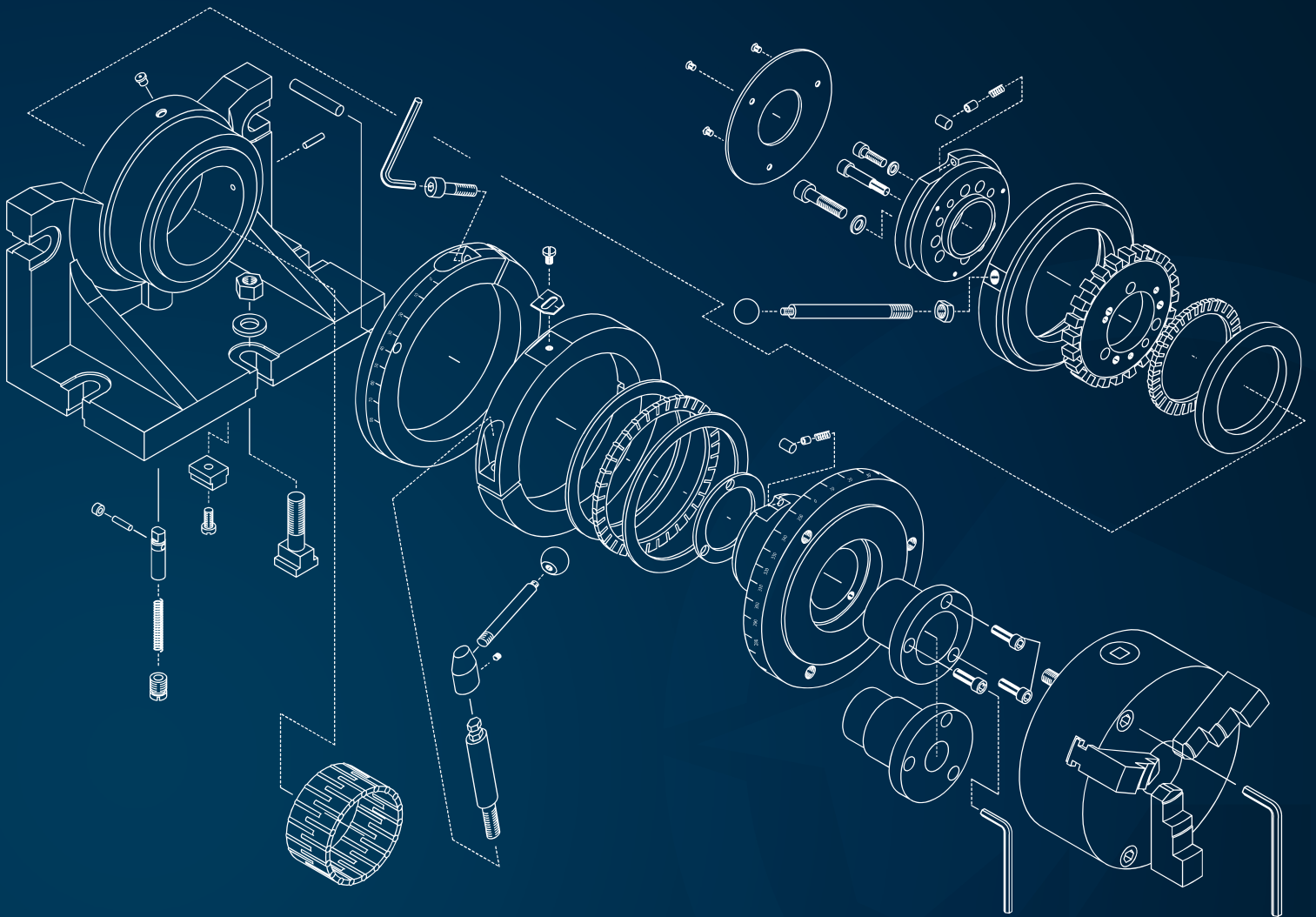
1250

PER CARICHI PESANTI, ROTANTE
SWIVEL HEAVY-DUTY BENCH VICE



S	L	a	d	FORZA DI SERRAGGIO MAX (daN) MAX CLAMPING FORCE (daN)	KG
63	229	63	9	1200	4
80	280	80	11	1800	6.6
100	282	80	11	2200	7.5
125	323	100	11	2600	10.5
150	380	125	13	3400	16.2
175	434	150	13	3800	23

DIVISORI, TAVOLE GIREVOLI, TARTARUGHE
INDEXING FIXTURES, ROTARY TABLES, BOX JAWS



DIVISORI ORIZZONTALI / VERTICALI HORIZONTAL / VERTICAL INDEXING FIXTURES

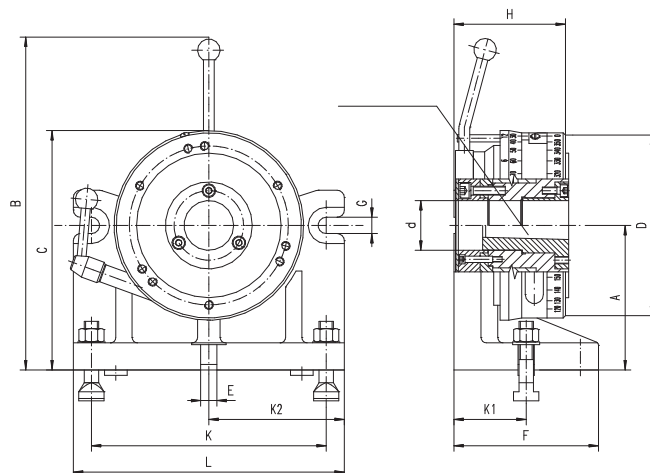
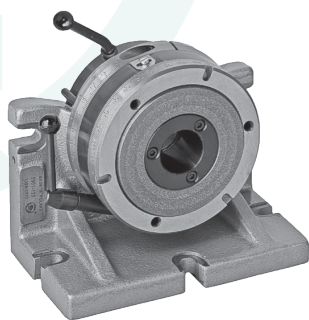
GHISA DI ALTA QUALITÀ
HIGH-QUALITY CAST IRON

5901

ALTEZZE 100-160
HEIGHTS 100-160

5911

ALTEZZE 200-250
HEIGHTS 200-250



A	D	E	F	L	CONO MORSE MORSE TAPER	KG
100	125	18	130	215	3	14
125	160	18	140	245	3	23
160	200	18	160	300	4	41
200	250	18	180	340	4	42.5
250	315	18	200	400	5	97

A	PESO MAX. PEZZO DI LAVORO (daN) MAX. WORKPIECE WEIGHT (daN)			
	CON MANDRINO WITH CHUCK		SENZA MANDRINO WITHOUT CHUCK	
	CON SUPPORTO WITH SUPPORT	SENZA SUPPORTO WITHOUT SUPPORT	CON SUPPORTO WITH SUPPORT	SENZA SUPPORTO WITHOUT SUPPORT
100	20	40	30	60
125	30	60	40	70
160	35	70	51	86
200	40	80	70	110
250	50	90	95	135

MANDRINI CONSIGLIATI* SUGGESTED CHUCKS

3274 / 3674



1

PAG. 2

3275 / 3675

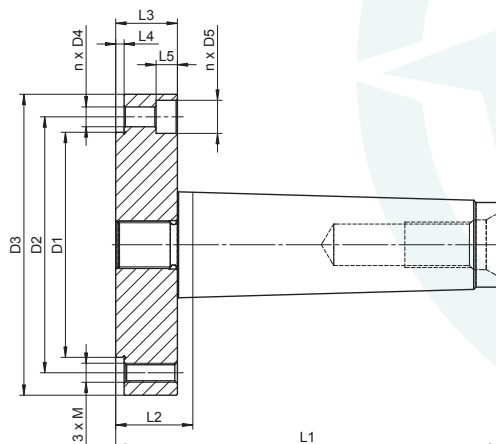


1

PAG. 4

* ED EQUIVALENTI VERSIONI IN ACCIAIO
* AND EQUIVALENT STEEL VERSIONS

FLANGIA CON CONO MORSE ADAPTER WITH MORSE TAPER



9156
FISSA
FIXED

(MANDRINO NON INCLUSO)
(CHUCK NOT INCLUDED)

W	CONO MORSE MORSE TAPER	D1	D2	D3	D4	D5	L1	L2	L3	L4	L5	M	n	KG
125	3	95	108	127	8,4	14	116	35	26	3,5	9	M8	3	2,6
125	4	95	108	127	8,4	14	135	32,5	26	3,5	9	M8	3	2,8
125	5	95	108	127	8,4	14	162	32,5	26	3,5	9	M8	3	3,6
160	3	125	140	162	10,5	17	116	35	26	3,5	11	M10	3	4,1
160	4	125	140	162	10,5	17	135	32,5	26	3,5	11	M10	3	4,3
160	5	125	140	162	10,5	17	162	32,5	26	3,5	11	M10	3	5,1
200	5	160	176	200	10,5	18	168	38,5	26	3,5	11	M10	3	7,4
250	5	200	224	250	13,5	20	170	40,5	28	3,5	13	M12	3	11,4

MANDRINI CONSIGLIATI*
SUGGESTED CHUCKS

3274 / 3674



1

PAG. 2

3275 / 3675



1

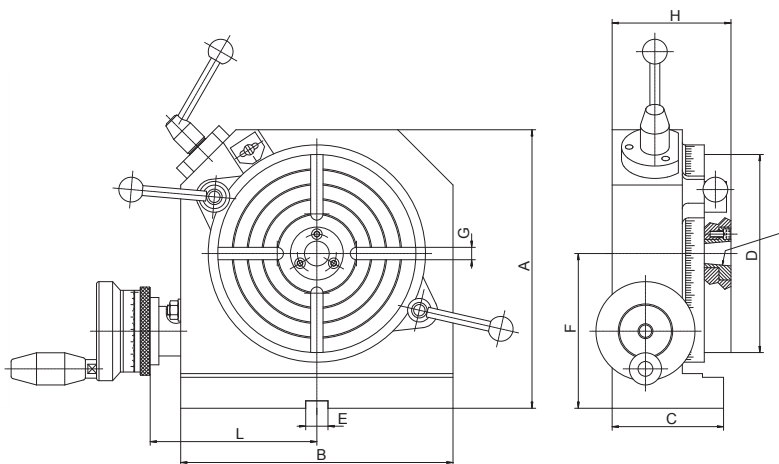
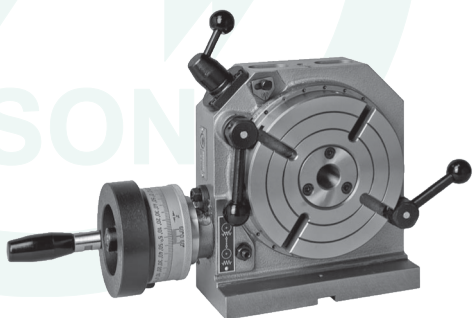
PAG. 4

* ED EQUIVALENTI VERSIONI IN ACCIAIO
* AND EQUIVALENT STEEL VERSIONS

TAVOLA ROTANTE ORIZZONTALE / VERTICALE HORIZONTAL / VERTICAL ROTARY TABLE

GHISA DI ALTA QUALITÀ
HIGH-QUALITY CAST IRON

5859



D	B	C	E	F	G	CONO MORSE MORSE TAPER	KG
160	200	90	14	125	4x10	3	20
200	240	95	14	150	4x10	3	25
250	285	115	18	175	4x12	3	55
320	348	115	18	200	4x12	3	80
400	430	125	18	250	6x14	4	122
500	535	170	18	315	8x16	5	260

D	PESO MAX. PEZZO DI LAVORO (daN) MAX. WORKPIECE WEIGHT (daN)	
	ORIZZONTALE HORIZONTAL	VERTICALE VERTICAL
160	85	40
200	120	45
250	160	80
320	210	110
400	350	125
500	210	110

**MANDRINI CONSIGLIATI
SUGGESTED CHUCKS**

3274 / 3674



1
PAG. 2

3275 / 3675



1
PAG. 4

**FLANGIA CORRISPONDENTE
CORRESPONDING ADAPTER PLATE**

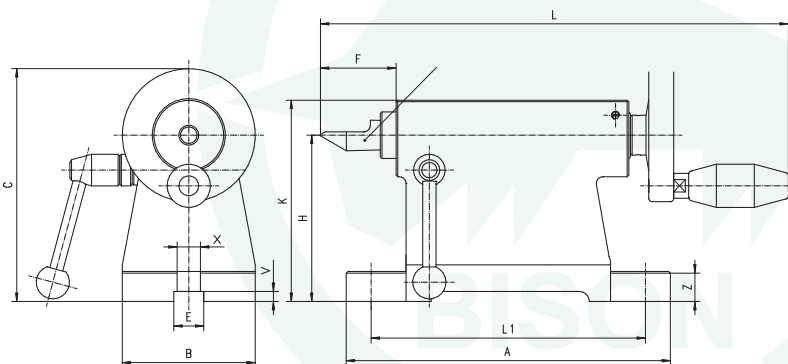
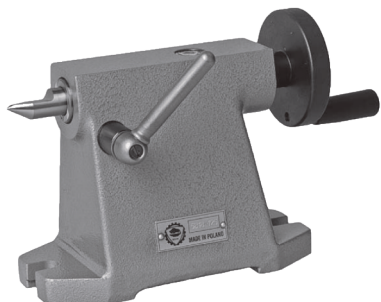
8293



(NECESSARIA SOLO PER MANDRINI A 3 GRIFFE)
(ONLY NEEDED FOR 3-JAW CHUCKS)

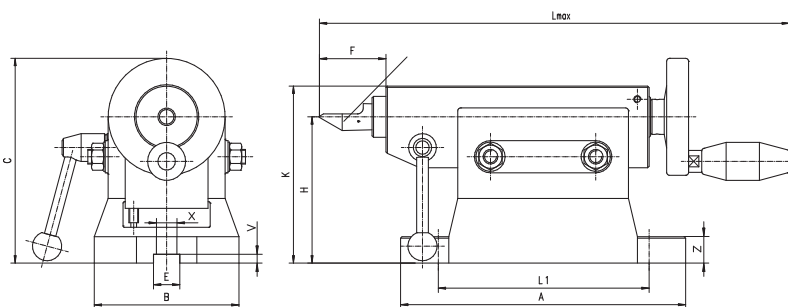
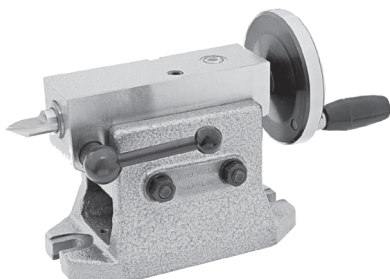
CONTROPUNTE PER DIVISORI E TAVOLE GIREVOLI TAILSTOCKS FOR INDEXING FIXTURES AND ROTARY TABLES

5818
FISSA
FIXED



H	A	B	E	Fmin	Fmax	KG
100	195	80	18	33	63	6.1
125	195	90	18	39	69	7.4
160	250	115	18	48	85	12.7
200	275	130	18	59.5	99.5	17.9
250	280	150	18	59.5	99.5	23.1

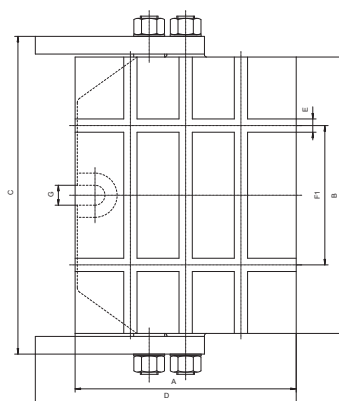
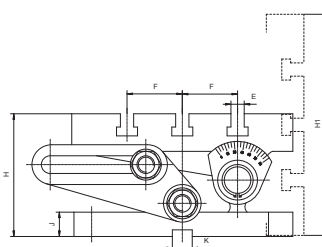
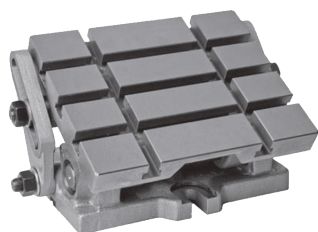
5819
REGOLABILE
ADJUSTABLE



Hmin	Hmax	A	B	E	Fmin	Fmax	KG
95	130	195	100	18	40	70	12
130	170	250	120	18	50	90	18.8
170	200	280	142	18	50	90	25.5
200	220	280	142	18	50	90	28.7
220	250	300	164	18	60	100	43

TAVOLA INCLINABILE SWIVEL ANGLE PLATE

5150



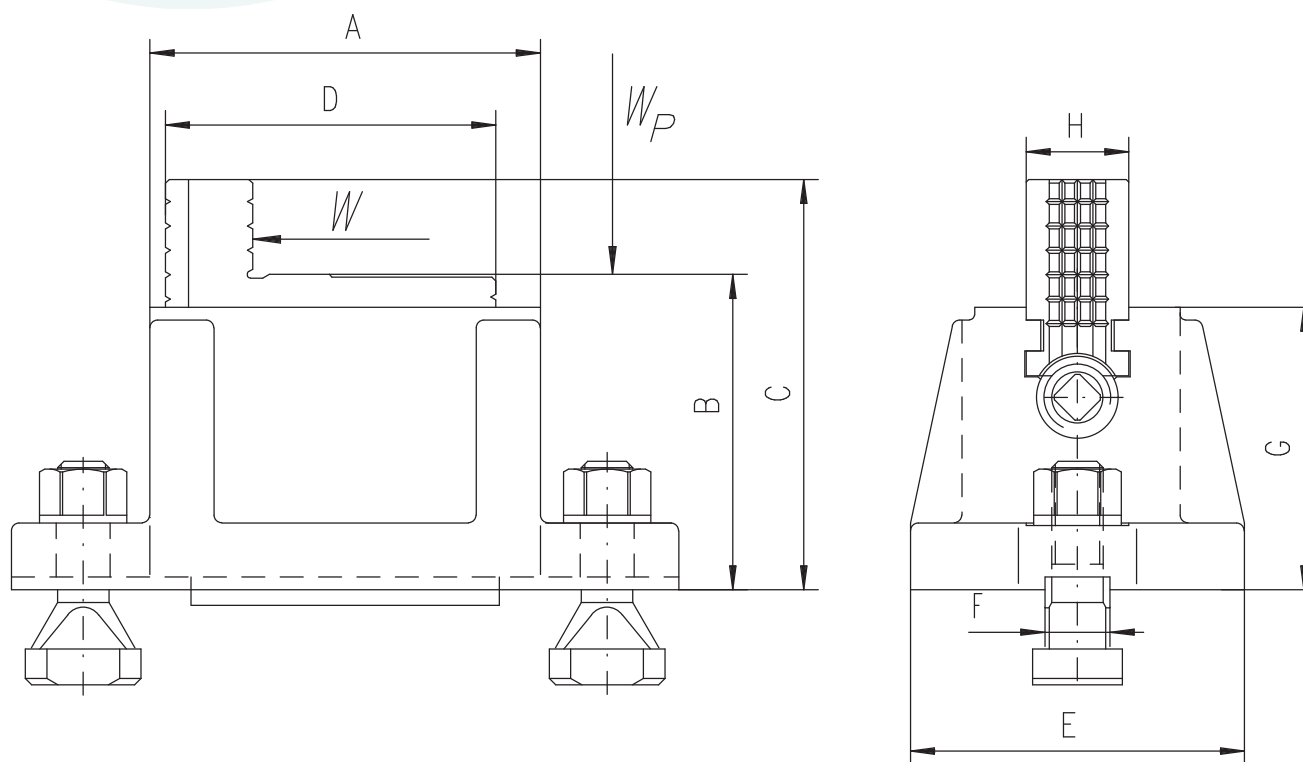
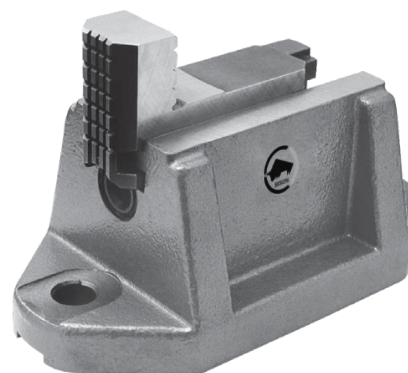
A	B	E	F	H	PESO DI LAVORO (daN) MAX. WORK WEIGHT (daN)	KG
200	250	12	50	111	60	21
250	315	14	63	127	100	37

DISPONIBILE VERSIONE CON MAGGIORE INCLINAZIONE
VERSION WITH HIGHER SWIVEL ANGLE AVAILABLE

TARTARUGHE BOX JAWS

9170

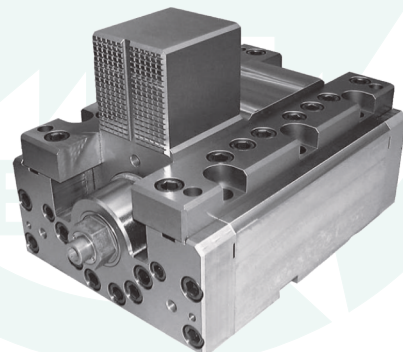
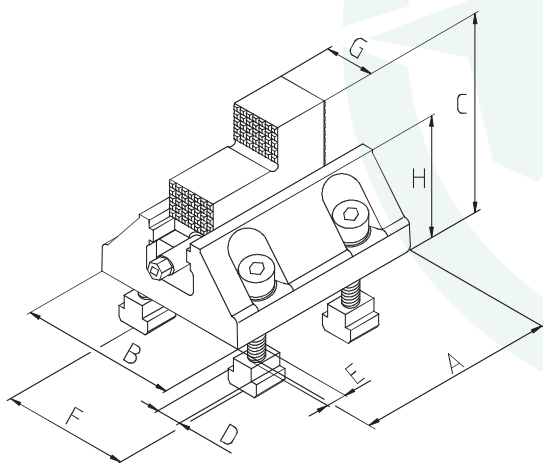
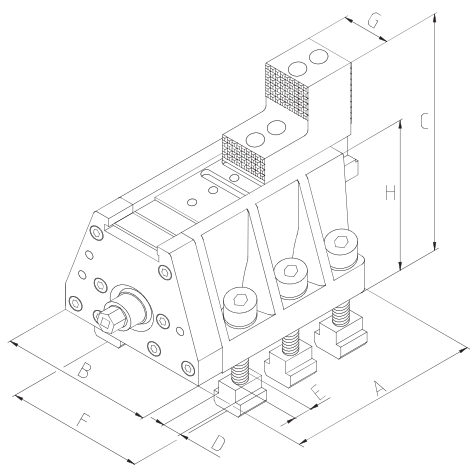
SET DI 4 TARTARUGHE
BOX JAWS (SET OF 4)



A	D	E	F	G	H	FORZA DI SERRAGGIO (kN) CLAMPING FORCE (kN)	CARICO (kg) WEIGHT LOAD (kg)		PESO PER TARTARUGA WEIGHT PER BOX JAW
							W	W _p	
152	159.8	130	25.4	110	40	28	3175	6350	15.4
200	169.8	140	25.4	110	52	35	4080	8160	17

DISPONIBILE IN VERSIONE HEAVY DUTY
HEAVY DUTY VERSION AVAILABLE

TARTARUGHE PERSONALIZZATE CUSTOM BOX JAWS



1 DIMENSIONI BASATE SUI DISEGNI DIMENSIONS BASED ON DRAWINGS

A.	B.
C.	D.
E.	F.
G.	H.

2 FORZA DI SERRAGGIO DESIDERATA DESIRED CLAMPING FORCE

(kN)

3 TIPO DI MANDRINO CHUCK TYPE

- MANDRINO MANUALE
MANUAL CHUCK
- MANDRINO AUTOMATICO
POWER CHUCK
- MANDRINO MANUALE + AMPLIFICATORE DI COPPIA
MANUAL CHUCK + TORQUE AMPLIFIER

4 VERSIONE DEL CORPO BODY VERSION

- VERSIONE APERTA
OPEN VERSION
- VERSIONE CHIUSA
CLOSED VERSION
- VERSIONE CHIUSA, CON LUBRIFICAZIONE SU GUIDE
ED ELEMENTI DI TRASMISSIONE
CLOSED VERSION, WITH LUBRICATION ON GUIDES
AND DRIVE ELEMENTS

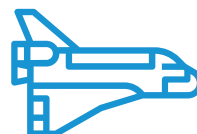
5 DATI DI CONTATTO CONTACT INFO

RAGIONE SOCIALE COMPANY NAME	_____
PERSONA DI CONTATTO CONTACT PERSON	_____
TELEFONO PHONE NUMBER	_____
E-MAIL	_____

APPLICATION



AUTOMOTIVE



**AEROSPACE
INDUSTRY**



**MEDICAL
INDUSTRY**



**MECHANICAL
ENGINEERING**



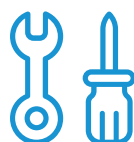
BISON



**STEEL
CONSTRUCTION**



RAILWAY



**TOOL & MOLD
PRODUCTION**



**POWER
GENERATION**

**PER ULTERIORI INFORMAZIONI SUI PRODOTTI PRESENTI NELLA NOSTRA GAMMA, ED OTTENERE I DISEGNI TECNICI,
VI PREGHIAMO DI RICHIEDERE IL CATALOGO COMPLETO AL VOSTRO REFERENTE BISON DI FIDUCIA.**

*FOR FURTHER INFO REGARDING PRODUCTS IN OUR RANGE, AND TO OBTAIN THE TECHNICAL DRAWINGS,
WE KINDLY ASK YOU TO REQUEST THE COMPLETE CATALOGUE TO YOUR TRUSTED BISON REPRESENTATIVE.*

BISON ITALIA SRL

VIA DELLE ARTI 10
40023 - CASTEL GUELFO (BO)
ITALY

+39 0542-1890365
INFO@BISON-BIAL.IT

1 1. MANDRINI MANUALI E AUTOMATICI

2 2. CONTROPUNTE FISSE E ROTANTI

3 3. MORSE E DIVISORI

4 4. MANDRINERIA